

THIRD AMENDMENT TO
DECLARATION OF CONDOMINIUM
OF
INGLEWOOD TOWNHOMES, A CONDOMINIUM
Miami, Florida 33010

THIS THIRD AMENDMENT TO DECLARATION OF CONDOMINIUM made this
10th day of September, 1987, by V.D.P. CONSTRUC-
TION CORP., A Florida Corporation, called the Developer, for itself,
its successors, grantees and assigns.

WHEREIN, the Developer makes the following declarations:

1. PURPOSE. The purpose of this Third Amendment to the
Declaration of Condominium is to add Phase III to INGLEWOOD TOWN-
HOMES, A Condominium, and to submit the lands described in this
instrument and the improvements on those lands to the Condominium
form of ownership and use in the manner provided by Chapter 718,
Florida Statutes, hereafter called the Condominium Act. Phase III
is added to this Condominium pursuant to paragraph XXIX of the
Declaration of Condominium of INGLEWOOD TOWNHOMES, A Condominium,
dated April 25, 1984, and recorded in Official Records Book 12154,
at Page 2148, Public Records of Dade County, Florida, and pursuant to
the provisions of Section 718.403, Florida Statutes.

2. THE LAND. The lands owned by Developer in fee simple,
which by this instrument are submitted in fee simple to the Condo-
minium form of ownership as Phase III of INGLEWOOD TOWNHOMES, A
Condominium, together with all easements, rights and appurtenances
belonging thereto, are lands lying in Dade County, Florida, more
particularly described in Exhibit A, Page 4, which is attached
hereto and made a part hereof.

3. IMPROVEMENTS. Construction of Phase III is substantially
completed as of the date of this Third Amendment and Surveys of the
Apartments are attached hereto as Exhibit A, Page 1, is substantially
completed as of the date of this Third Amendment. A Surveyor's
Certificate as to these Apartments, as required by Section 718.104(4)(e),

Florida Statutes, is attached hereto marked Exhibit A, Page 1, and made a part hereof.

4. EXHIBITS TO THIRD AMENDMENT TO DECLARATION. A complete list of the Exhibits to this Third Amendment to Declaration of Condominium which are attached hereto and made a part hereof for the purpose of establishing, creating and adding Phase III, as part of INGLEWOOD TOWNHOMES, A Condominium, are as follows:

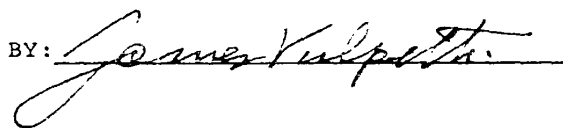
<u>Exhibit No.</u>	<u>Title</u>
A - Page 4	Legal Description of lands submitted to Condominium ownership Phase III.
A - Page 1	Survey of lands in Phase III
A - Page 1	Certificate of Surveyor as to Phase III

5. OWNERSHIP OF COMMON ELEMENTS AND COMMON SURPLUS. The undivided share in the land, access easements and other common elements and in the common surplus that are appurtenant to each apartment in this Condominium as a result of this Third Amendment is as set forth in Exhibit B to the Declaration of Condominium.

6. PROVISIONS OF DECLARATION APPLICABLE. By reason of this Third Amendment to the Declaration of Condominium of INGLEWOOD TOWNHOMES, A Condominium, all of the covenants, conditions, restrictions, easements, terms and other provisions of the aforesaid Declaration of Condominium recorded in Official Records Book 12154, at Page 2148, as amended by the Amendment thereto recorded in Official Records Book 12302, at Page 1428, all in the Public Records of Dade County, Florida, shall apply to the additional lands hereby submitted to the Condominium form of ownership in the same manner as if said lands were initially submitted to Condominium ownership as part of the aforesaid Declaration of Condominium and the aforesaid Amendment thereto.

IN WITNESS WHEREOF, the Developer has executed this Declaration the day and year first above written.

V.D.P. CONSTRUCTION CORP., A Florida Corporation

BY: 

LAW OFFICES
KING, LEAVY & RABIN
PROFESSIONAL ASSOCIATION

STATE OF FLORIDA
COUNTY OF DADE

The foregoing instrument was acknowledged before me this
10th day of September, 1987, by
James Vulpetti, the President of V.D.P.
CONSTRUCTION CORP., A Florida Corporation, on behalf of the
corporation.

Maria E. Parcia
Notary Public, State of Florida at
Large

My Commission Expires:

NOTARY PUBLIC STATE OF FLORIDA
MY COMMISSION EXP. AUG 18, 1991
BONDED THRU GENERAL INS. UNO.

INGLEWOOD TOWNHOMES
A CONDOMINIUM

CERTIFICATION:

WE HEREBY CERTIFY: that the construction of the improvements which comprise the INGLEWOOD TOWNHOMES, A CONDOMINIUM, is in accordance with the materials which comprise EXHIBIT "A", to the declaration of condominium of INGLEWOOD TOWNHOMES, A CONDOMINIUM together with the provision of said declaration of the location and dimensions of the improvements, and the location, and dimensions of the Common Elements and of each Unit's can be determined from these materials. The undersigned also hereby certifies that all planned improvements, including but not limited to, landscaping, utility services, and access to the Unit and Common Elements facilities serving the building in which the Units to be conveyed are located have been Existing.

MARIO PRATS JR. AND ASSOCIATES, INC.

By *[Signature]* President
Mario Prats Jr.
Professional Land Surveyor No. 1332
State of Florida.

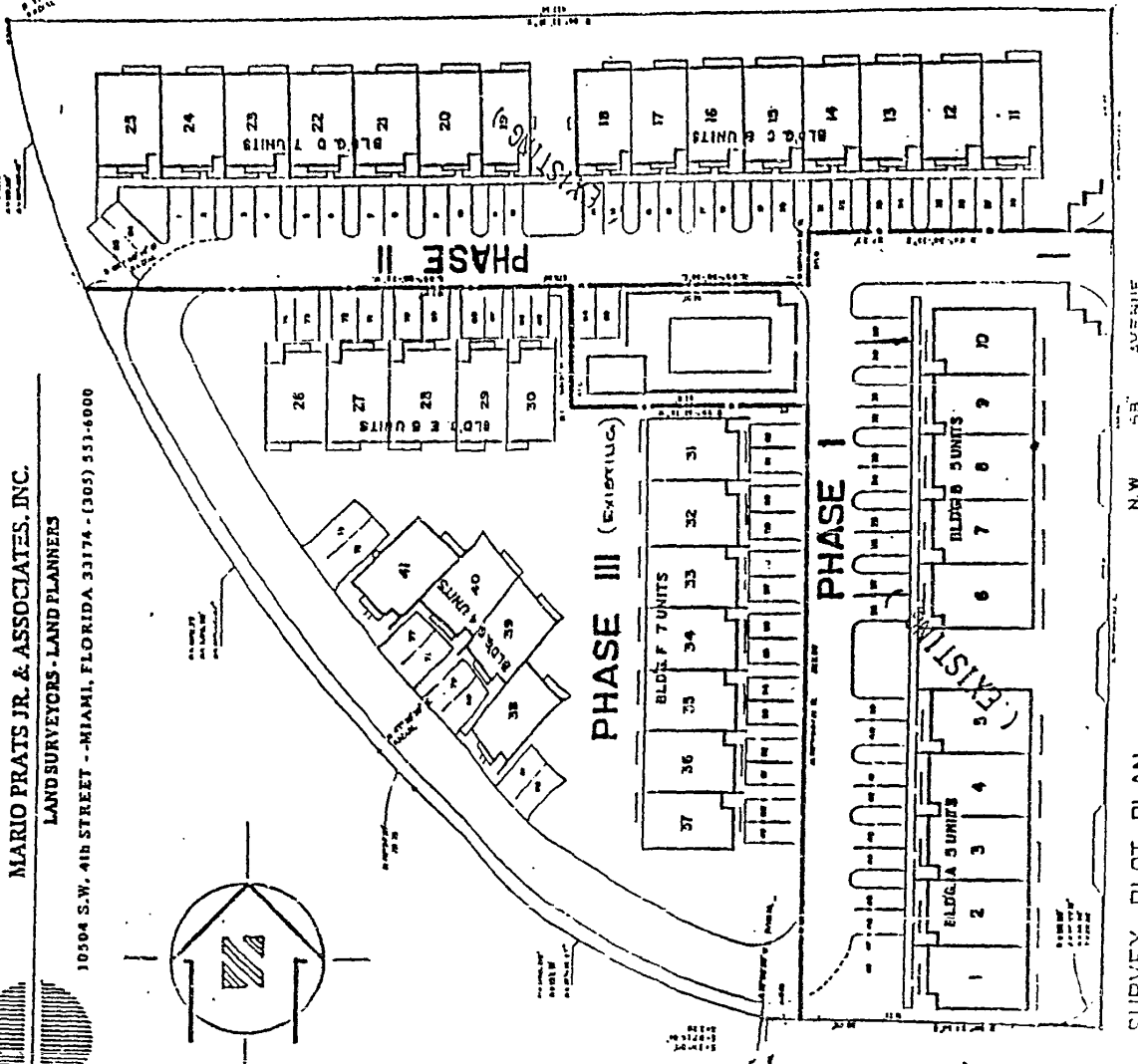
THIS IS TO CERTIFY: That the location and dimensions of Building and other improvements shown herein were obtained from plans prepared by OSCAR GONZALEZ ARCHITECT, and are subject to changes or revisions at a later date

MARIO PRATS JR. AND ASSOCIATES, INC.

By *[Signature]* President
Mario Prats Jr.
Professional Land Surveyor No. 1332
State of Florida.

LEGAL DESCRIPTION: INGLEWOOD TOWNHOMES, A CONDOMINIUM, located in Tract "A", V.D.P. TRACT, according to the plat thereof, as recorded in Plat Book 119, at Page 54, of the Public Records of Dade County Florida.

EXHIBIT



MARIO PRATS JR. & ASSOCIATES, INC.
LAND SURVEYORS - LAND PLANNERS
10504 S.W. 4th STREET - MIAMI, FLORIDA 33174 - (305) 553-6000

SURVEY PLOT PLAN
N.W. 55th AVENUE

CLERK NOTE:
FOR DECLARATION OF CONDOMINIUM
SEE OFFICIAL RECORD BK 13479 PG. 3392



10504 S.W. 4th STREET - MIAMI, FLORIDA 33174 - (103) 551-6000

MARIO PRATS JR. & ASSOCIATES, INC.
LAND SURVEYORS - LAND PLANNERS

INGLEWOOD TOWNHOMES
A CONDOMINIUM

PHASE I LEGAL DESCRIPTION

A PORTION OF TRACT "A" "V.D.P. TRACT" ACCORDING TO THE PLAT THEREOF AS RECORDED IN PLAT BOOK 118 AT PAGE 84 OF THE PUBLIC RECORDS OF DADE COUNTY FLORIDA, BEING MORE PARTICULARLY DESCRIBED AS FOLLOWS:

COMMENCE AT THE NORTHEAST CORNER OF SAID TRACT "A"; THENCE SOUTH 0 DEGREE 04 MINUTES 21 SECONDS EAST FOR 83.33 FEET TO THE POINT OF BEGINNING; THENCE CONTINUE SOUTH 0 DEGREE 04 MINUTES 21 SECONDS EAST, ALONG THE WESTERLY RIGHT-OF-WAY OF N.W. 68TH AVENUE, FOR 275.61 FEET TO A POINT OF CURVATURE; THENCE SOUTHWESTERLY ALONG A CIRCULAR CURVE TO THE RIGHT HAVING A RADIUS OF 25.00 FEET AND A CENTRAL ANGLE OF 91 DEGREE 29 MINUTES 51 SECONDS FOR AN ARC DISTANCE OF 39.92 FEET TO A POINT OF TANGENCY; THENCE NORTH 88 DEGREES 34 MINUTES 30 SECONDS WEST FOR 91.71 FEET; THENCE NORTH 0 DEGREES 04 MINUTES 21 SECONDS WEST FOR 227.20 FEET; THENCE SOUTH 89 DEGREES 55 MINUTES 39 SECONDS WEST FOR 92.00 FEET; THENCE NORTH 0 DEGREES 04 MINUTES 21 SECONDS WEST FOR 47.00 FEET; THENCE NORTH 89 DEGREES 55 MINUTES 39 SECONDS EAST FOR 92.00 FEET; THENCE NORTH 0 DEGREES 04 MINUTES 21 SECONDS WEST FOR 24.30 FEET; THENCE NORTH 89 DEGREES 55 MINUTES 39 SECONDS EAST FOR 117.33 FEET TO THE POINT OF BEGINNING. CONTAINING 0.89 ACRES MORE OR LESS AND LYING IN DADE COUNTY, FLORIDA

EXHIBIT A



MARIO PRATS JR. & ASSOCIATES, INC.

LAND SURVEYORS - LAND PLANNERS

10504 S.W. 418 STREET - MIAMI, FLORIDA 33174 - (305) 551-6000

INGLEWOOD TOWNHOMES

A CONDOMINIUM

PHASE II LEGAL DESCRIPTION

A PORTION OF TRACT "A" V.D.P. TRACT" ACCORDING TO THE PLAT THEREOF AS RECORDED IN PLAT BOOK 118 AT PAGE 84 OF THE PUBLIC RECORDS OF DADE COUNTY, FLORIDA, BEING MORE PARTICULARLY DESCRIBED AS FOLLOWS:

BEGIN AT THE NORTHEAST CORNER OF SAID TRACT "A"; THENCE SOUTH 0 DEGREES 04 MINUTES 21 SECONDS EAST, ALONG THE WESTERLY RIGHT-OF-WAY OF N.W. 68TH AVENUE, FOR 83.33 FEET; THENCE SOUTH 89 DEGREES 55 MINUTES 39 SECONDS WEST FOR 117.33 FEET; THENCE SOUTH 0 DEGREES 04 MINUTES 21 SECONDS EAST FOR 24.00 FEET; THENCE SOUTH 89 DEGREES 55 MINUTES 39 SECONDS WEST FOR 275.20 FEET TO A POINT ON THE NEXT DESCRIBED CURVE, SAID POINT BEARING NORTH 66 DEGREES 40 MINUTES 14 SECONDS EAST FROM THE RADIUS POINT OF SAID CURVE; THENCE NORTHWESTERLY ALONG A CIRCULAR CURVE TO THE RIGHT HAVING A RADIUS OF 612.75 FEET AND A CENTRAL ANGLE OF 10 DEGREES 33 MINUTES 51 SECONDS FOR AN ARC DISTANCE OF 112.98 FEET; THENCE NORTH 89 DEGREES 55 MINUTES 39 SECONDS EAST FOR 427.34 FEET TO THE POINT OF BEGINNING. CONTAINING 0.95 ACRES MORE OR LESS AND LYING IN DADE COUNTY, FLORIDA.

EXHIBIT A

10504 S.W. 41st STREET . MIAMI, FLORIDA 33174 . (305) 551-6000

MARIO PRATS JR. & ASSOCIATES, INC.
LAND SURVEYORS . LAND PLANNERS

INGLEWOOD TOWNHOMES

A CONDOMINIUM

PHASE III LEGAL DESCRIPTION

A PORTION OF TRACT "A" "V.D.P. TRACT" ACCORDING TO THE PLAT THEREOF AS RECORDED IN PLAT BOOK 118 AT PAGE 84 OF THE PUBLIC RECORDS OF DADE COUNTY, FLORIDA, BEING MORE PARTICULARLY DESCRIBED AS FOLLOWS:

COMMENCE AT THE NORTHEAST CORNER OF SAID TRACT "A"; THENCE SOUTH 0 DEGREES 04 MINUTES 21 SECONDS EAST, ALONG THE WESTERLY RIGHT-OF-WAY OF N.W. 68TH AVENUE, FOR 83.33 FEET; SOUTH 89 DEGREES 55 MINUTES 39 SECONDS WEST FOR 117.33 FEET; THENCE SOUTH 0 DEGREES 04 MINUTES 21 SECONDS EAST FOR 24.00 FEET; THENCE SOUTH 89 DEGREES 55 MINUTES 39 SECONDS WEST FOR 183.20 FEET TO A POINT ON THE NEXT DESCRIBED CURVE, SAID POINT BEARING NORTH 66 DEGREES 40 MINUTES 14 SECONDS EAST FROM THE RADIUS POINT OF SAID CURVE; THENCE SOUTHEASTERLY ALONG A CIRCULAR CURVE TO THE LEFT HAVING A RADIUS OF 612.75 FEET AND A CENTRAL ANGLE OF 19 DEGREES 14 MINUTES 44 SECONDS FOR AN ARC DISTANCE OF 205.82 FEET TO A POINT OF TANGENCY; THENCE SOUTH 42 DEGREES 34 MINUTES 30 SECONDS EAST FOR 20.00 FEET TO A POINT OF CURVATURE; THENCE SOUTHEASTERLY ALONG A CIRCULAR CURVE TO THE LEFT HAVING A RADIUS OF 306.26 FEET AND A CENTRAL ANGLE OF 31 DEGREES 16 MINUTES 57 SECONDS FOR AN ARC DISTANCE OF 167.21 FEET TO A POINT ON THE NEXT DESCRIBED CURVE, SAID POINT BEARING SOUTH 0 DEGREES 59 MINUTES 26 SECONDS WEST FROM THE RADIUS POINT OF SAID CURVE; THENCE SOUTHEASTERLY ALONG A CIRCULAR CURVE TO THE RIGHT HAVING A RADIUS OF 290.00 FEET AND A CENTRAL ANGLE OF 0 DEGREES 26 MINUTES 04 SECONDS FOR AN ARC DISTANCE OF 2.20 FEET TO A POINT OF TANGENCY; THENCE SOUTH 88 DEGREES 34 MINUTES 30 SECONDS EAST FOR 8.01 FEET; THENCE NORTH 0 DEGREES 04 MINUTES 21 SECONDS WEST FOR 227.20 FEET; THENCE SOUTH 89 DEGREES 55 MINUTES 39 SECONDS WEST FOR 92.00 FEET; THENCE NORTH 0 DEGREES 04 MINUTES 21 SECONDS WEST FOR 47.00 FEET TO THE POINT OF BEGINNING. CONTAINING 1.05 ACRES MORE OR LESS AND LYING IN DADE COUNTY, FLORIDA.

EXHIBIT A



MARIO PRATS JR. & ASSOCIATES, INC.
LAND SURVEYORS - LAND PLANNERS
10504 S.W. 41st STREET - MIAMI, FLORIDA 33174 - (305) 551-6000

INGLEWOOD TOWNHOMES
A CONDOMINIUM

PHASE I AND II LEGAL DESCRIPTION

A PORTION OF TRACT "A" "V.D.P. TRACT" ACCORDING TO THE PLAT THEREOF AS RECORDED IN PLAT BOOK 118 AT PAGE 84 OF THE PUBLIC RECORDS OF DADE COUNTY, FLORIDA, BEING MORE PARTICULARLY DESCRIBED AS FOLLOWS:

BEGIN AT THE NORTHEAST CORNER OF SAID TRACT "A"; THENCE SOUTH 0 DEGREES 04 MINUTES 21 SECONDS EAST FOR 358.94 FEET TO A POINT OF CURVATURE; THENCE SOUTHWESTERLY ALONG A CIRCULAR CURVE TO THE RIGHT HAVING A RADIUS OF 25.00 FEET AND A CENTRAL ANGLE OF 91 DEGREES 29 MINUTES 51 SECONDS FOR AN ARC DISTANCE OF 39.92 FEET TO A POINT OF TANGENCY; THENCE NORTH 83 DEGREES 34 MINUTES 30 SECONDS WEST FOR 91.71 FEET; THENCE NORTH 0 DEGREES 04 MINUTES 21 SECONDS WEST FOR 227.20 FEET; THENCE SOUTH 89 DEGREES 55 MINUTES 39 SECONDS WEST FOR 92.00 FEET; THENCE NORTH 0 DEGREES 04 MINUTES 21 SECONDS WEST FOR 47.0 FEET; THENCE SOUTH 89 DEGREES 55 MINUTES 39 SECONDS WEST FOR 183.20 FEET TO A POINT ON THE NEXT DESCRIBED CURVE, SAID POINT BEARING NORTH 66 DEGREES 40 MINUTES 14 SECONDS EAST FROM THE RADIUS POINT OF SAID CURVE; THENCE NORTHWESTERLY ALONG A CIRCULAR CURVE TO THE RIGHT HAVING A RADIUS OF 612.75 FEET AND A CENTRAL ANGLE OF 10 DEGREES 33 MINUTES 51 SECONDS FOR AN ARC DISTANCE OF 112.98 FEET; THENCE NORTH 89 DEGREES 55 MINUTES 39 SECONDS EAST FOR 427.34 FEET TO THE POINT OF BEGINNING, CONTAINING 1.84 ACRES MORE OR LESS AND LYING IN DADE COUNTY, FLORIDA.

EXHIBIT A



MARIO PRATS JR. & ASSOCIATES, INC.
LAND SURVEYORS - LAND PLANNERS
13504 S.W. 41st STREET - MIAMI, FLORIDA 33174 - (305) 551-6000

INGLEWOOD TOWNHOMES
A CONDOMINIUM

PHASES I, II AND III LEGAL DESCRIPTION

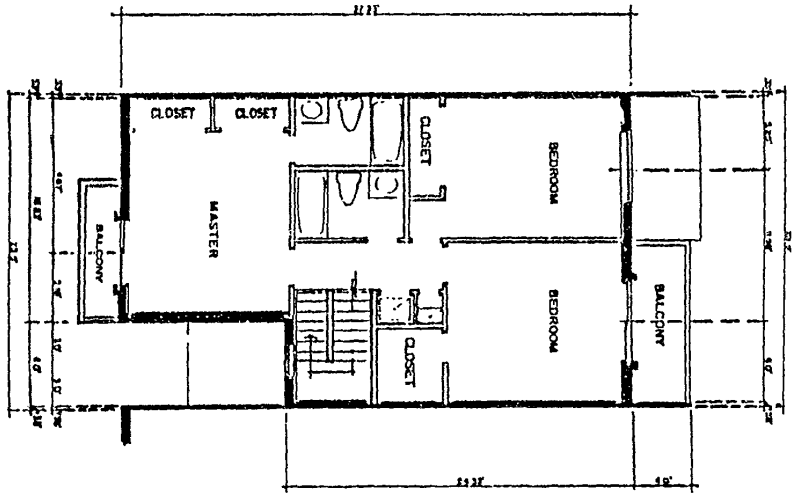
ALL OF TRACT "A" "V.D.P. TRACT" ACCORDING TO THE PLAT THEREOF AS RECORDED IN PLAT BOOK 118 AT PAGE 84 OF THE PUBLIC RECORDS OF DADE COUNTY, FLORIDA, CONTAINING 2.89 ACRES MORE OR LESS AND LYING IN DADE COUNTY, FLORIDA.



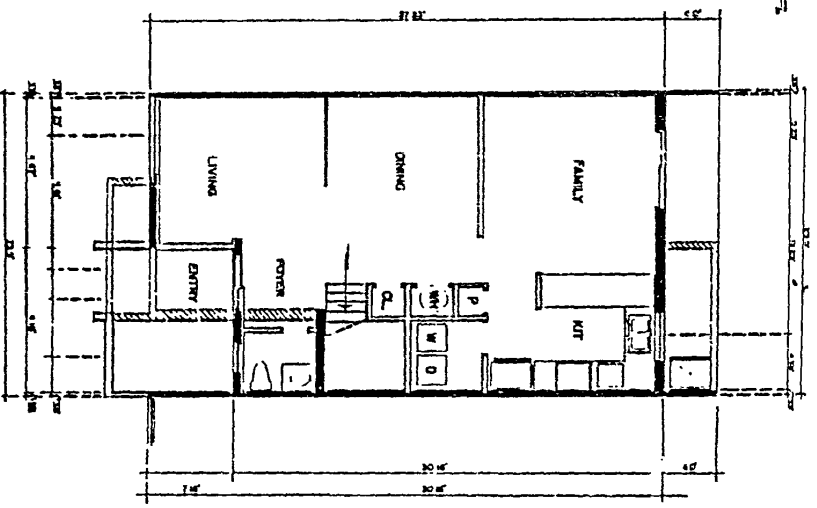
MARIO PRATIS JR. & ASSOCIATES, INC.
LAND SURVEYORS - LAND PLANNERS
10504 S.W. 41st STREET - MIAMI, FLORIDA 33174 - (305) 551-6000

INGLEWOOD TOWNHOMES
A CONDOMINIUM

TYPICAL UNIT



SECOND FLOOR PLAN

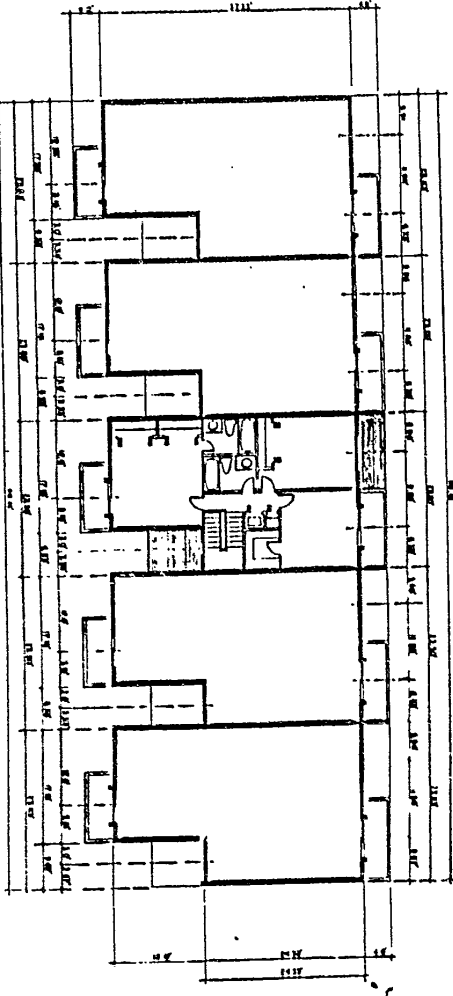


FIRST FLOOR PLAN

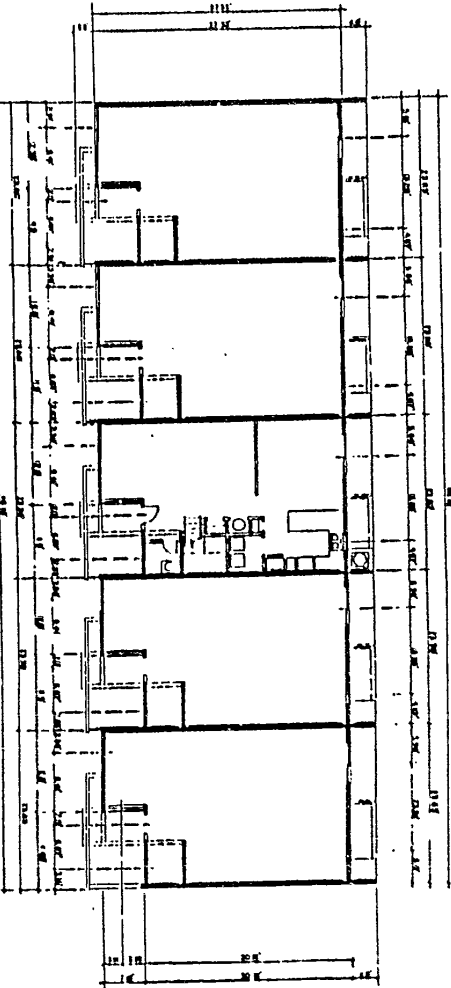


MARIO PRATS JR. & ASSOCIATES, INC.
LAND SURVEYORS - LAND PLANNERS
10506 S.W. 418 STREET - MIAMI, FLORIDA 33174 - (305) 551-6000

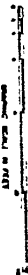
BUILDING: A, B, E SECOND FLOOR PLAN



BUILDING: A, B, E GROUND FLOOR PLAN



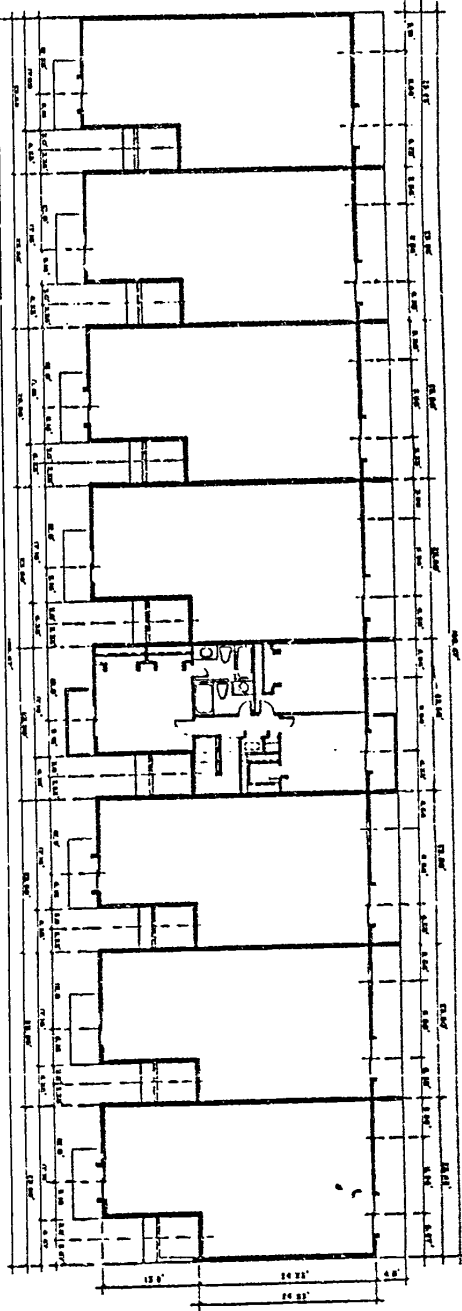
INGLEWOOD TOWNHOMES
A CONDOMINIUM



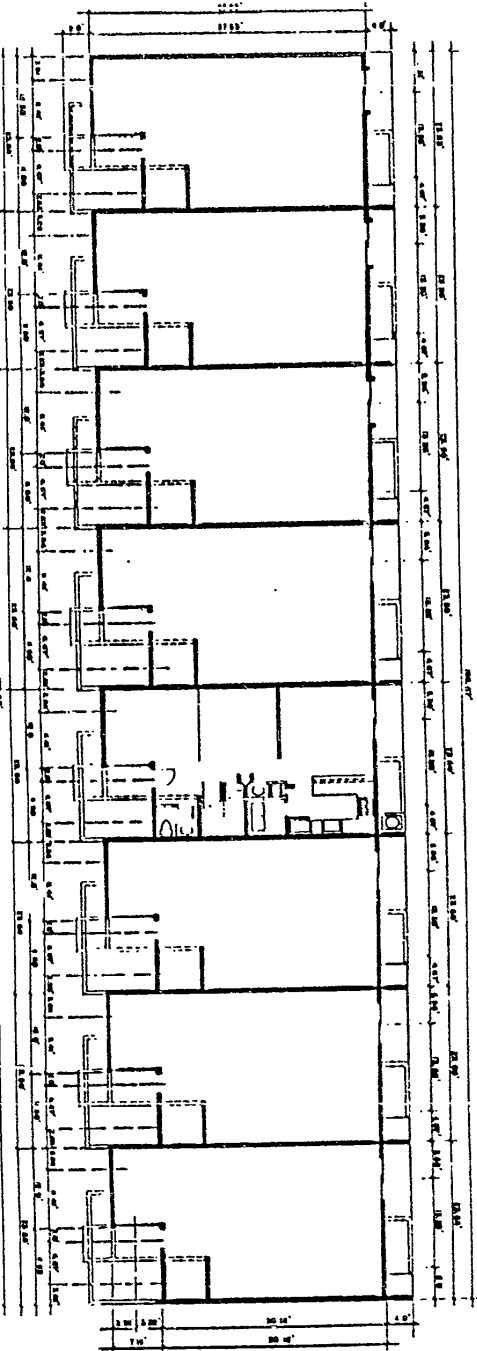
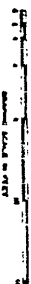


MARIO PRATS JR. & ASSOCIATES, INC.
LAND SURVEYORS - LAND PLANNERS
10504 S.W. 4th STREET - MIAMI, FLORIDA 33174 - (305) 551-6000

BLDG C SECOND FLOOR PLAN



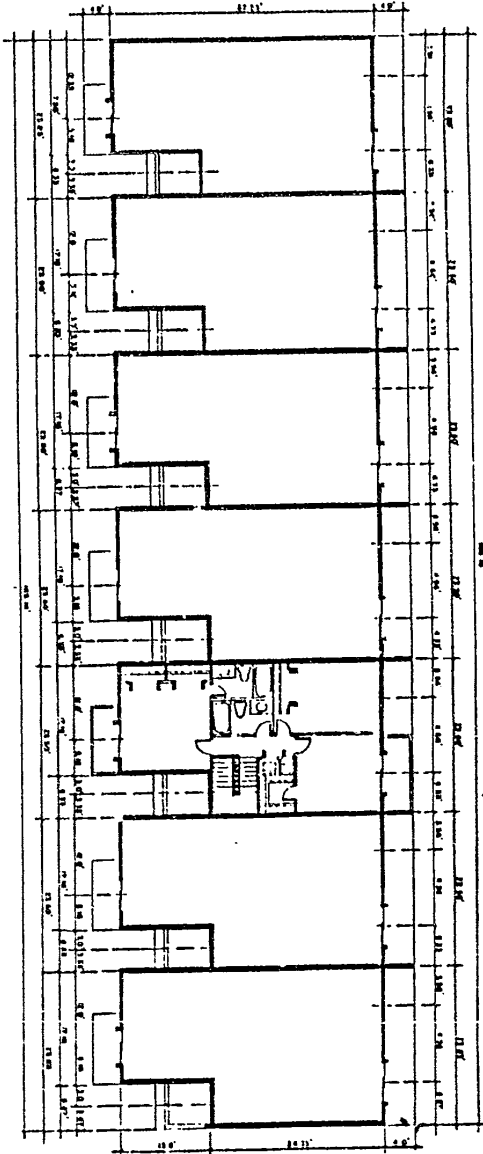
INGLEWOOD TOWNHOMES
A CONDOMINIUM



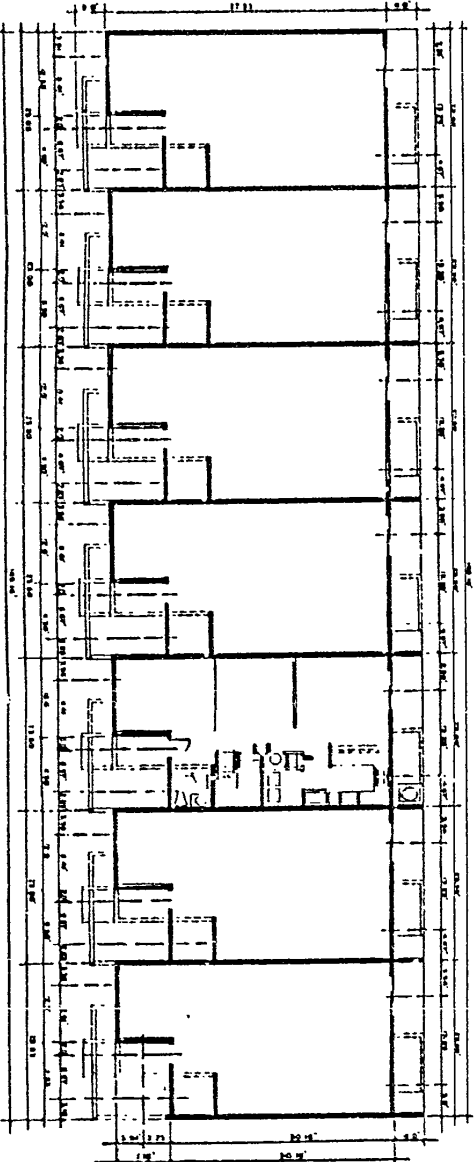


20504 S.W. 41st STREET - MIAMI, FLORIDA 33174 - (305) 551-6000

MARIO PRATS JR. & ASSOCIATES, INC.
LAND SURVEYORS - LAND PLANNERS



BLDG. D, F SECOND FLOOR PLAN



BLDG. D, F GROUND FLOOR PLAN

INGLEWOOD TOWNHOMES
A CONDOMINIUM

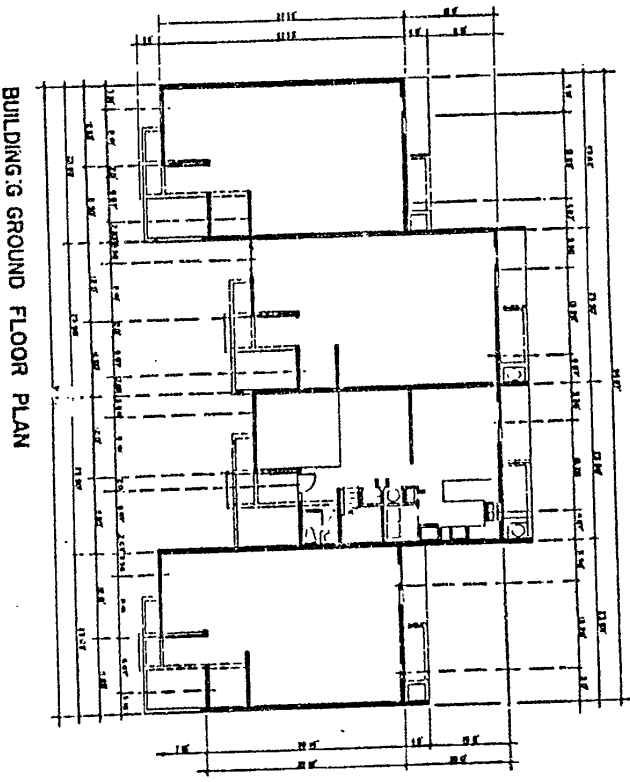
SCALE: AS SHOWN

EXHIBIT "A"

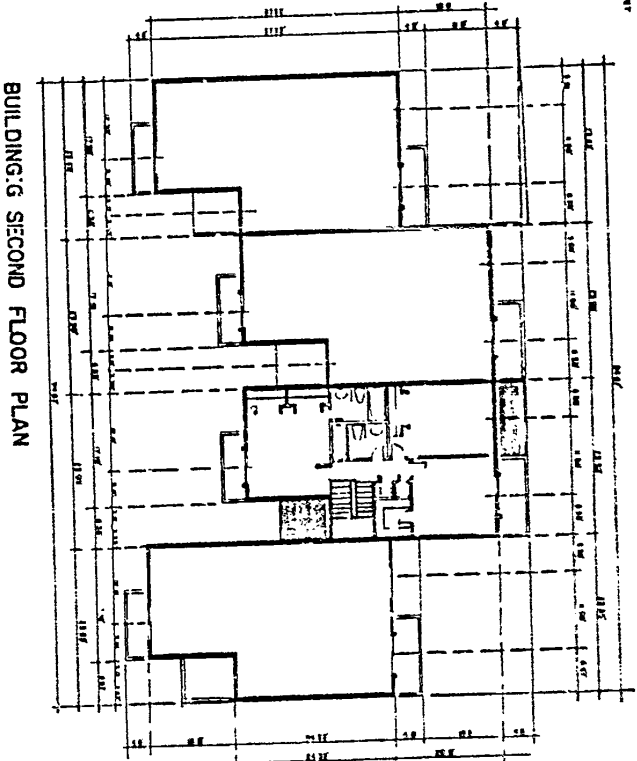


MARIO PRATS JR. & ASSOCIATES, INC.
LAND SURVEYORS - LAND PLANNERS
10304 S.W. 4th STREET - MIAMI, FLORIDA 33174 - (305) 551-4000

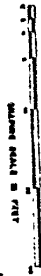
INGLEWOOD TOWNHOMES
A CONDOMINIUM



BUILDING'S GROUND FLOOR PLAN



BUILDING'S SECOND FLOOR PLAN

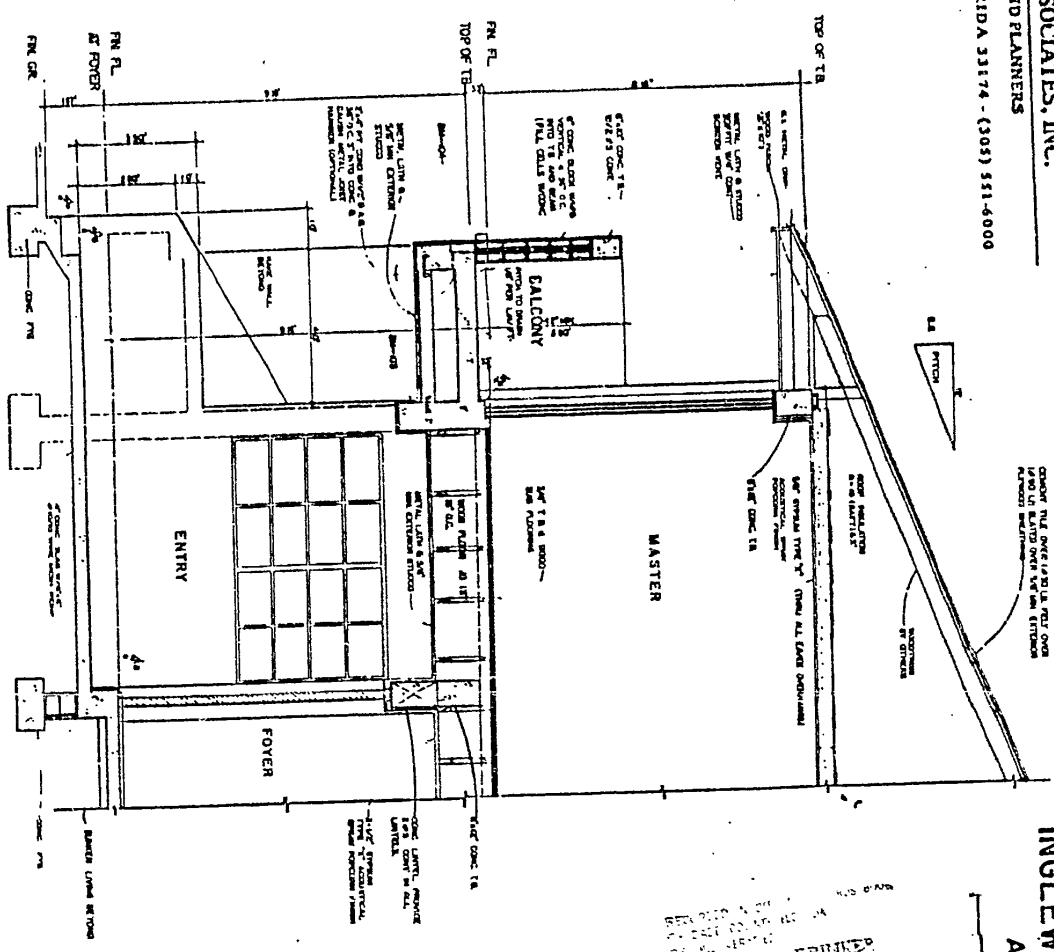




MARIO PRATS JR. & ASSOCIATES, INC.
LAND SURVEYORS - LAND PLANNERS
10504 S.W. 418 STREET - MIAMI, FLORIDA 33174 - (305) 551-6000

INGLEWOOD TOWNHOMES
A CONDOMINIUM

TYPICAL SECTION



RECORDED AND RETURNED TO
RECORDS DEPARTMENT
RICHARD P. BRINKER
CLERK OF COURT

CLERK NOTE:
FOR CONDOMINIUM PLANS SEE OFFICIAL
RECORDS CONDOMINIUM PLANS BK. 08 PAGE 9

RICHARD P. BRINKER, CLERK
CIRCUIT & COUNTY COURT
BY *[Signature]* D. G.

EXHIBIT 9A